

Sheep Production

Ms. Frey
Elsie Allen FFA



Sheep (Ovine) Terms

- Ewe – Mature Female Sheep
- Ewe Lamb- Immature female sheep
- Ram or Buck – Mature Male Sheep
- Wether- Castrated male sheep
- Lamb- Under one year
- Lambing – Act of giving birth in sheep
- Gestation- 5 months -147 days

Why choose sheep?

- Sheep can survive where cows can't
- Easier to get started due to less equipment needed

Breed Categories

- Wool Type: Fine –Long Coarse Wool
- Meat Type: Terminal Breeds
- Dual Purpose: Meat & Wool

Wool Importance

- Fiber length is key in higher quality wool
- White wool is more valuable



Lambing

- Many lambs are lost in the first 24 hrs
- Twins - first born gets separated while second is being born
- Assist in difficult lambings



Lambing

- Keep ewe and lamb together for first 24 hours or more if the ewe doesn't want to claim the lamb
- Grafting: adopting lambs (triplets) onto other ewes (with singles or dead lambs)
 - can be difficult to get ewe to claim lamb

Management

- Identification: mark lambs with paint brands, or ear tags or tattoo ears (purebreds)
- Docking: cut off tails
- Castration: remove testicles

Management

- Dock & Castrate before 6 weeks old
- Wean at 5-6 months or 100 lbs.....
- Shear at least once per year, before lambing (20-40% of income)



Sheep Breeds



Hampshire

- Originated in Hampshire, England
- Black face and legs
- Mild demeanor
- Unbroken wool cap should extend from the neck over the forehead



Hampshire



Suffolk

- Originated in England
- Most popular breed in the US today
- Produce large amounts of meat
- White with black faces and legs



Suffolk



Hampshire vs. Suffolk



Dorset

- Originated in Europe
- Medium-sized breed with high quality, white wool
- Most popular white-faced breed in the United States
- Horned and polled varieties exist

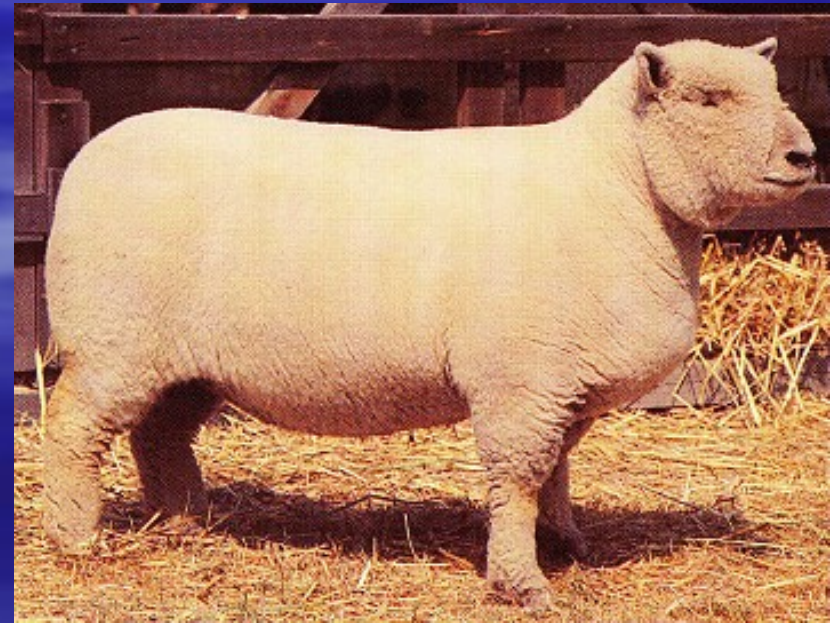
Dorset



Southdown

“The Little Guy”

- Developed in England
- Well suited to farm flock production
- Gray face with white body
- Adapted to wet conditions



Southdown



“Others”



Predators



Sheep Farmer's Best Friend



Sheep Farmer's Best Friend

