

BLACK BEARS

April Williams

Subject Area: Science

Grade Level: 4

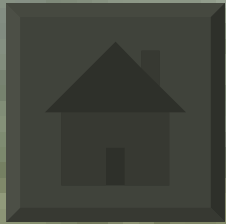


Introduction

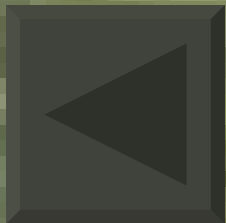
- The world of black bears is a unique and interesting environment. Students often feel as though black bears are vicious creatures. This presentation is designed to give the true facts about the black bear. Pay close attention, there will be a quiz!!



Navigation



This button will take back to the main menu that is found on the next slide.



This button will take you back to the previous slide in the presentation.



This button will move you forward to the next slide in the presentation.



Main Menu

- Lesson One: Black Bear Facts
- Lesson Two: Lifestyle
- Lesson Three: Hibernation
- Lesson Four: Bear Cubs
- Quiz



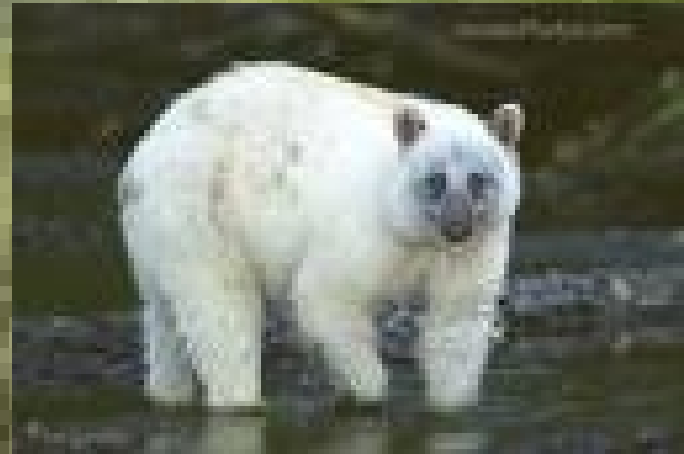
Black Bear Facts

- Black Bears can be black, brown, red, and even blond.
- Male Bears are boars, female bears are sows, and young bears are cubs.



Black Bear Facts

- The black bears age is determined by the number of growth rings in a cross-section of a tooth.
- The black bear is omnivorous. This means that they are opportunistic creatures that eat whatever they can find.



Black Bear Facts

- A black bear weighs 200 to 600 pounds.



Black Bear Facts

- Black bears are mostly solitary creatures. This means that they live mostly by themselves unless a mother just had cubs.
- The black bear is mostly nocturnal. They do most things at night. Occasionally the bear will venture out during the day



Black Bear Facts

- The black bear has a very acute sense of smell.
- They are very agile. This means that they are flexible.
- A black bear can climb a tree and swim very easily.



Congratulations!

You have now finished this section on Black Bears!

Please return to the main menu and begin the section labeled Lifestyle.



Black Bear Lifestyle

- Male black bears mark their territory with claw and teeth marks.
- Home range is the area that a bear occupies. A males home range is 18 miles.



Black Bear Lifestyle

- Black bears primarily eat fish and seals.
- They also eat nuts and berries found on trees.



Black Bear Lifestyle

- A full grown black bear can consume 80 pounds of food in a 10 day period. Adult black bears often need this amount in order to survive.



Black Bear Lifestyle

- In the fall, a black bear is preparing for their winter hibernation. The bear often gains 2 to 4 pounds a day in the fall. The bear needs this extra weight in order to survive the winter.



Black Bear Lifestyle

- The female bear spends the fall looking for a safe den that she can give birth to her cubs in.
- The male bear does not hibernate in the same den as the female.



Congratulations!

You have now finished this section on Black Bears!

Please return to the main menu and begin the section labeled Hibernation.



Hibernation

- Black bears spend the whole winter in the den, beginning in December.



Hibernation

- Black bears remain dormant in the den, but can be woken in just minutes.
- Black bears are not true hibernators. Their body temperature does not drastically decrease while asleep.



Hibernation

- Black bears spend six long months in the den.
- Black bears do not eat or go to the bathroom while in hibernation.



Hibernation

- The female bear gives birth to her cubs while in hibernation.
- She does not wake up while giving birth.



Hibernation

- Bears never use the same den twice.
- They search for a new den every year for fear that a human or wild animal will disturb them or kill the cubs.



Congratulations!

- You have now finished this section on Black Bears!
- Please return to the main menu and begin the section labeled Black Bear Cubs.



Black Bear Cubs

- Young bear cubs are born during hibernation inside the den.
- The litter size is one to five cubs. The average number is three.



Black Bear Cubs

- At birth, the cubs eyes are not yet open and their ears are not fully developed.
- They are able to walk after sixty days in the den.



Black Bear Cubs

- The cubs will feed off of their mother until they are seven months old. After this time period, they must eat whatever their mother can find.



Black Bear Cubs

- The young cubs are taught to hunt, fish, climb, and swim by their mother.
- Mother bears also communicate danger to their cubs.
- If a dangerous situation comes about, a bears instinct is to climb up a tree.



Black Bear Cubs

- The yearling cubs spend their second winter in the den with their mother.
- After the second year, the bears are driven off by the female bear.
- Male bears do not help raise the cubs.



You are now finished with all
of the lessons!

Please return to the main menu and
begin the section labeled Quiz. Read
each question carefully before
selecting your answer.



Black Bear Quiz

1. Male black bears are classified as:

- A. Sows
- B. Yearlings
- C. Boars



Sorry!

A. Sows is the incorrect answer. A sow is the female bear.



Nice Try!



Sorry!

B. Yearling is incorrect. A yearling bear is the cub that is in his or her first year of life.



Nice Try!



Great Choice!

C. Boars is the correct answer. A boar is the male bear.



Black Bear Quiz

2. A male bears home range is:

- A. Five Miles
- B. Ten Miles
- C. Twelve miles



Sorry!

A. Five miles is incorrect. A black bear needs a little more room than this.



Nice Try!



Sorry!

B. Ten miles is the incorrect answer. The black bears needs a little more room than this.



Nice Try!



Great Choice!

C. Twelve Miles is correct. A black bear needs this amount of room in order to survive.



Black Bear Quiz

3. Black bears spend how many months in the den?

- A. Four months
- B. Five months
- C. Six months



Sorry!

A. Four months is
incorrect.

Nice Try!



Sorry!

B. Five months is incorrect.

Nice Try!



Great Choice!

C. Six months is the correct answer. Black bears spend six months in hibernation.



Congratulations!

This is the end of the presentation. You did a great job! Please click on Return To Title Slide for the next user!



[Return To Title Slide](#)

[Return to Website Homepage](#)

