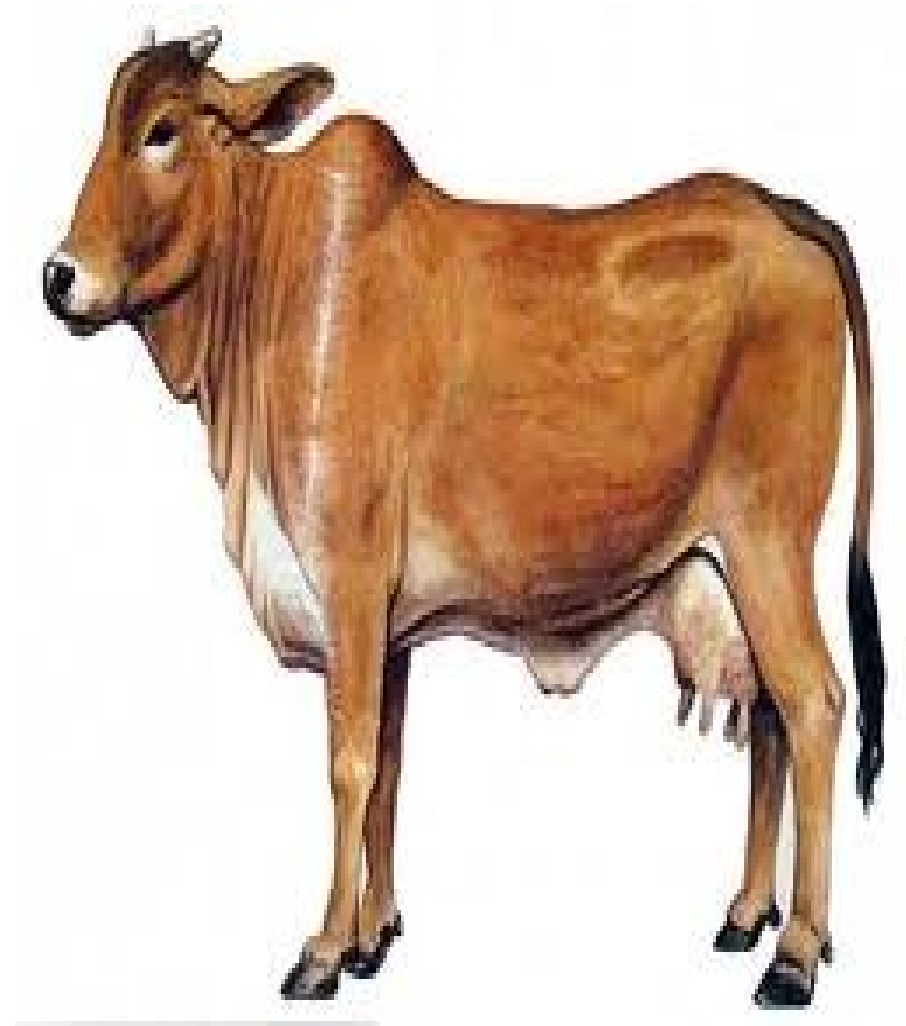


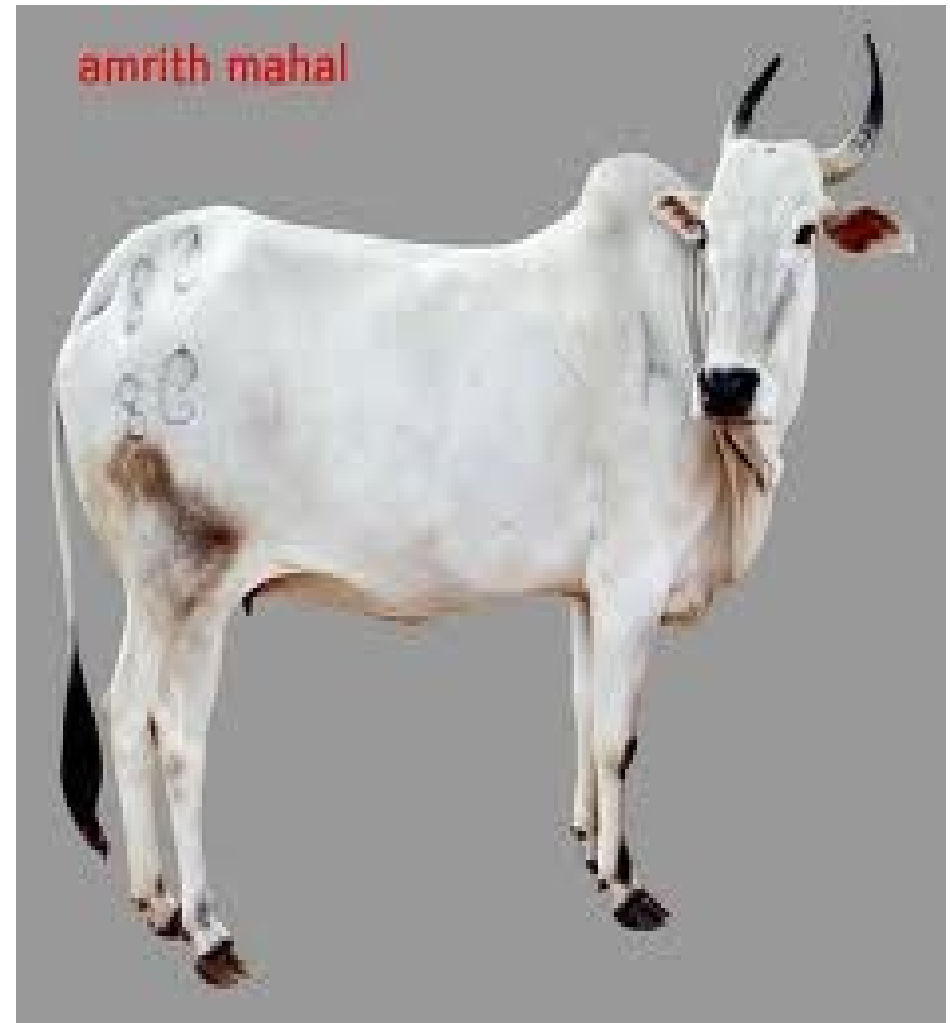
CATTLE COW

- Indian breeds



Amirth mahal

- Place: karnataka
- Bullocks: transept & trotting.
- Cows: poor milk -yielder
- Head: narrow head , furrowed forehead, bright.
- Body: long barrel & well rounded. closely tucked up navel.
- Legs: medium sized, hoofs are hard with narrow cleft.
- Tail: fine & moderate length.
- Udder: small & compact, teats are small & hard.
- Colour: grey/white.



Bachuar

- Place: Bihar (sitmarhi)
- Bullocks: good worker
- cows: poor milk – yielders

Head: medium sized, broad forehead, large, drooping ears & thick horns.

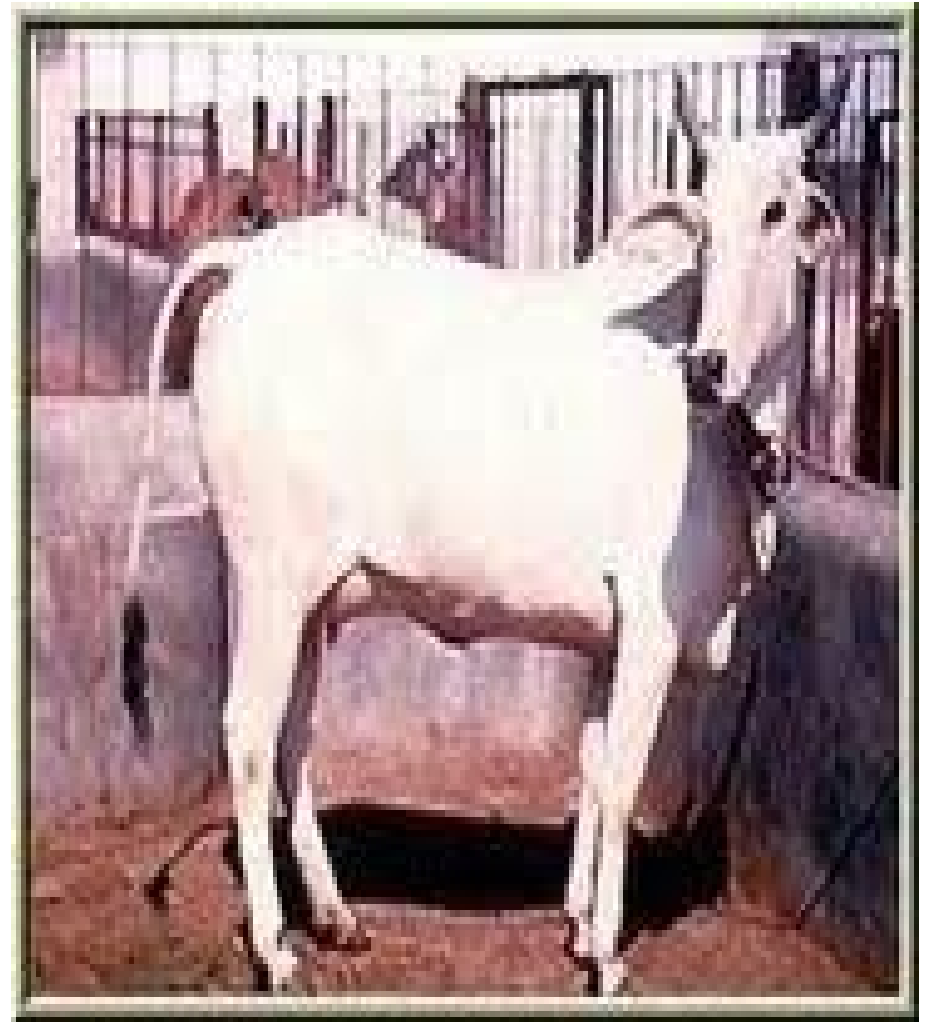
Body: compact body, small tucked up sheath, pendulous dewlap.

legs: strong & well shaped.

tail: big & short with black switch.

colour: grey

facts: thrive under poor condition of feed.



Bargur

- place:tamil nadu(bargur hill)
- cows:poor milk – yielder

Head:long head, prominent forehead, deep furrow between the roots of the horns, pointed horns.

Head;long head, prominent forehead, deep furrow between the roots of the horns, pointed horns.

Body:compact body, fairly light sheath.

Legs:short&hard hoof.

Tail:thin&tapering short.

- Colour:red&white/grey
- Fact:resemble halliker, difficult to train¬ed for speed.



Dangi

- Place:rajasthan
- Bullocks:working(rice field)
- Cows:poor milk – yielder
- Head:small head, bulging forehead, long face, short thick horn
- Body:long deep body.
- Legs:short&stout,powerfull quareters.
- Colour:red/brown/black&white
- Fact: thrive in heavy rainfall



Deoni

- place:Madhya pradesh
- Bullocks:working
- Cows:medium milk – yielder
- Head:long narrow face,stumpy horns with short ears.
- Body:long&narrow body,short muscular limbs ,developed sheath.
- Tail:short
- Colour: f-white&m-grey over neck, hump& quartess.



Gaolao

- Place:Madhya pradesh
- Bullocks:working
- Cows:medium milk – yielders
- Head:long narrow face, stumpy horns with short ears.
- Body:long narrow body, short muscular limbs, developed sheath.
- Tail:short
- Colour:female-white, male-grey over the neck, lump & quartess.



Gir

Place:Gujarat(gir foorest)

- Cows:good milk - yielder
- Head;massive head, extremely buging forehead, long narrow face, pendulous ears, curled-up leaf with notch at the tip, medium thicked horns.

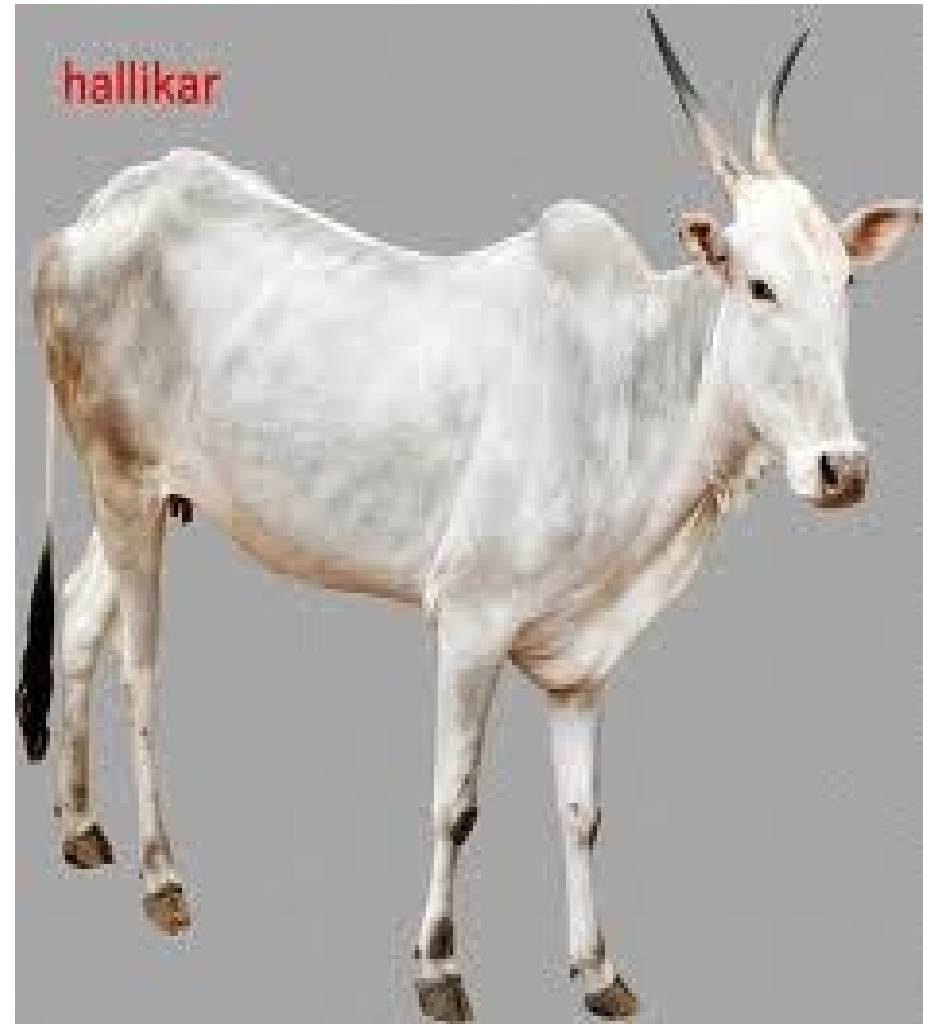
Body:deep, long, well rounded barrel.

- Legs:well proportioned & squarely placed
- Udder:good shaped&well placed teats
- Colour: red/red&white/red&black/speckeled red&white.



Hallikar

- Place:karnataka
- bullocks:anceport&field work
- cows:poor milk – yielder
- Head:long head & bulging forehead furrowed in middle. Horns are pointed & curved.
- Body:tucked navel flap& long & compact body.
- Legs:light&long
- Tail:long&fine
- Udder-small&compact
- Colour:dark/light grey



Haryana

- Place:Haryana
- Bullocks:ploughing,transport&powerfull
- Cows:good milk – yielder
- Head:narrow head.short&horizontal horns,bullocks longer.
- Body:long&compact barrel.
- Legs:long&strong.well shaped hoof.
- Tail:fine&short
- Udder:prominent&well shaped udder &teats.
- Colour:white/light grey



Kangayam

Place:tamil nadu (kangayam)

- Bullocks:strong&active,
• trancepor&ploughing.

Cows:poor milk – yielder

- Head:short.broad forehead, horns
• curved.

Body-compact&medium length barrel.

- Legs-short
- Tail&Udder:tail moderate long .medium
• sized udder& small teat.

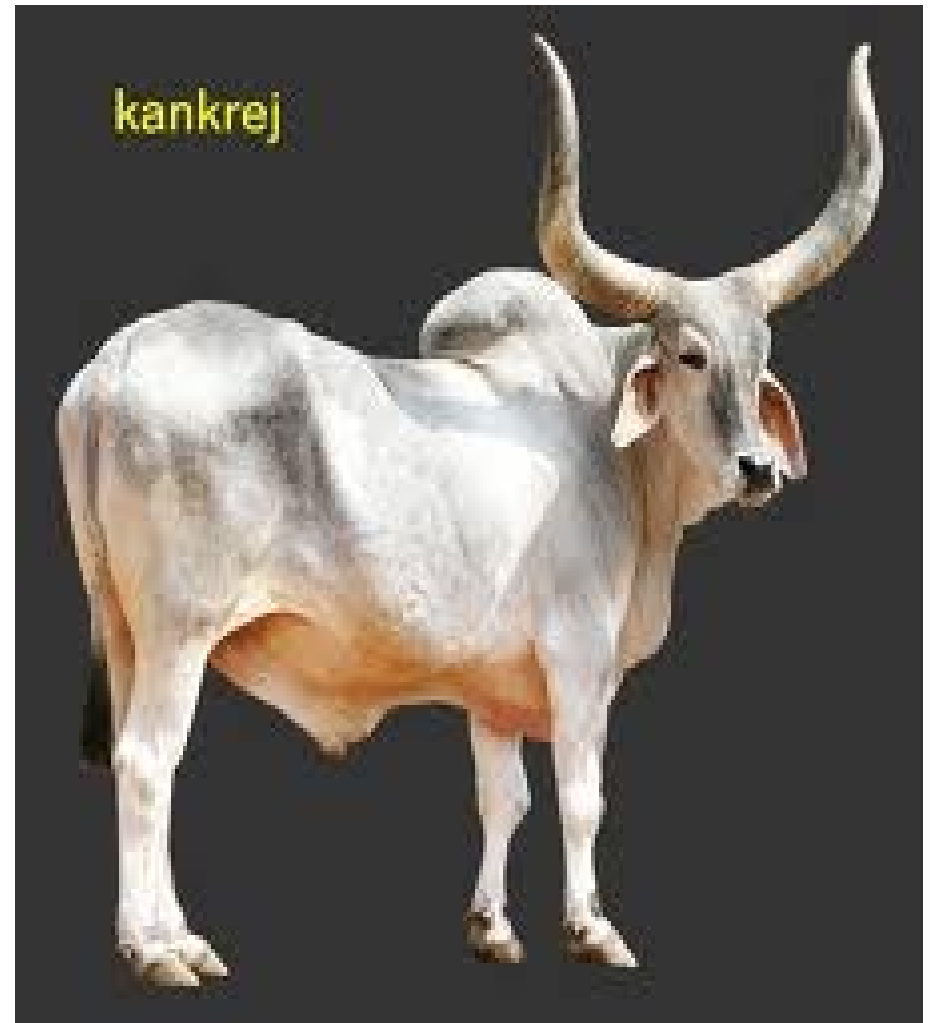
Colour:white/grey with black on knees.

- Till 4 months calfs are red.



Kankrej

- Place of origin: Gujarat
- Bulls: strong & active. transport & work.
- Cows: good milk – yielder.
- Head; narrow face, broad forehead above the eyes, thick horns.
- Body: compact, long, deep barrel.
- Legs: strong & straight. hard hoof
- Udder: medium sized.
- Colour: m-silver & f-lighter than male. calf red till 6 months.
- Facts: powerful cattle.



Kenkatha(U.P&M.P)



Kherigarh(U.P)



Khillari(Maharashtra&M.P)



Krishna valley (Maharashtra&A.P)



Malvi(Madhya pradesh)



Mewati(Rajasthan)



Nimari(Narmad River)



Ongole(Andhra Pradesh)



Ponwar(Uttar pradesh)



Siri(Darjeeling, Sikkim&Bhutan)



Cattle cow



- Foreign breeds

Holstein

- place:Holand
- Colour:black&white
- weight:F-1500pound, M-2000pound,calf 80-110pounds.
- Hieght:F-58inch M-60inch.
- lifetime:3-6years
- Body:long,narrow,straight head.
- milk:per day 46 l.
- Facts:milking uses & the will make cheese in this milk.



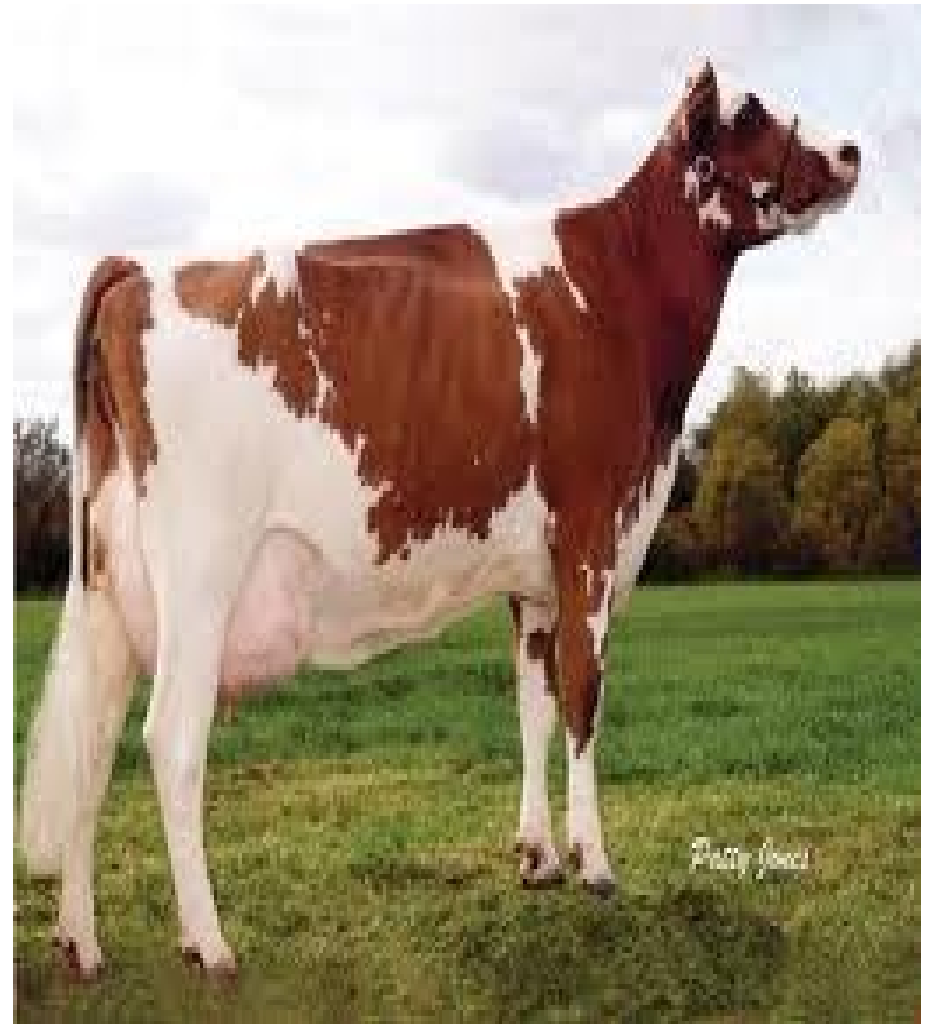
Jersey

- place:Jersey island
- Colour:solid brown/ fawn/brown splashed with white.
- Weight:F-900-1200 pounds,M-1200-1800 pounds.
- Body:broad face & prominent eyes.
- Milk:13 times its wieght.
- Facts:from 6ce its there, it can tolarate the heat more than others,there are more protien & fat in milk,eat-6h& cud-8h.



Ayrshire

- Place:Ayrshire in scotland.
- Bullocks:worker.
- Cows:good milker.
- Colour:redish orange with or without coloured leg.
- Weight:1000-1300 pounds.
- Facts:ulert&active, easy to train.some times very difficult to train.most beautiful breed.



Brown Swiss

- Place:alps in switzerland.
- Colour:varies from light-dark brown.
- Body:large bones, dished head, thick,loose skin.
- Fact:low somatic cell counts, ability to convert grass into milk.this is the 2 largest milk producer.



Guernsey

- Place: Island of Guernsey in France.
- Colour: cream/brown with/without white.
- Weight: F-450 to 500 kg
M-600 to 700 kg.
- Body: udder are less symmetrical than Jersey, and face are longer than Jersey.



German Fleckvieh

- Place: German
- Facts: lives onle cold climate, mainly in continental climate. Recently it is introduced in India (Himachal pradesh).



Red Sindhi

- Place:Pakistan
- Cows:high milk – yielder
- Weight:F-340kg,M-420kg.
- Hieght:F-116cm,M-134cm.
- Colour:red/yellowish brown/dark brown.
- Facts:from 1954 pakistan goverment gave gift to australia.



Sahiwal



Tharparker

